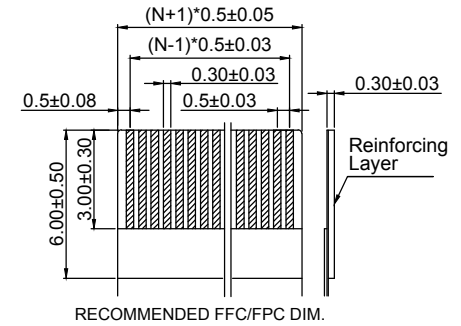
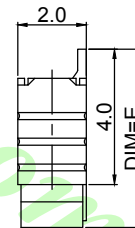
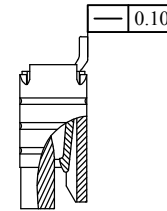
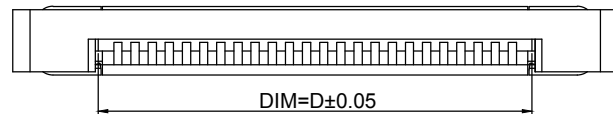
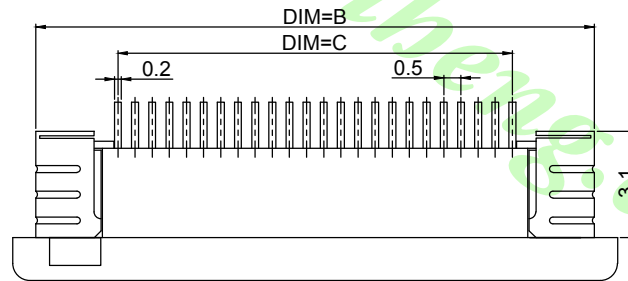
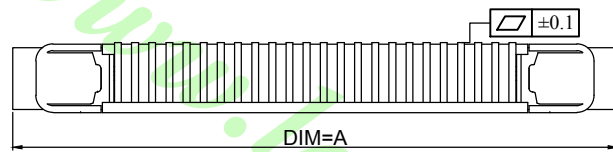
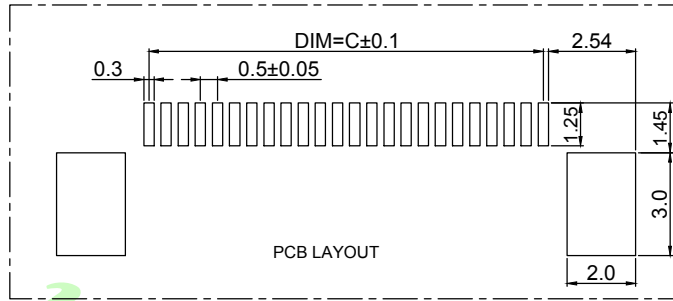


PIN	DIM=A	DIM=B	DIM=C	DIM=D	DIM=E
60	35.6	34.5	29.50	30.60	
59	35.1	34.0	29.00	30.10	
58	34.6	33.5	28.50	29.60	
57	34.1	33.0	28.00	29.10	
56	33.6	32.5	27.50	28.60	
55	33.1	32.0	27.00	28.10	
54	32.6	31.5	26.50	27.60	
53	32.1	31.0	26.00	27.10	
52	31.6	30.5	25.50	26.60	
51	31.1	30.0	25.00	26.10	
50	30.6	29.5	24.50	25.60	
49	30.1	29.0	24.00	25.10	
48	29.6	28.5	23.50	24.60	
47	29.1	28.0	23.00	24.10	
46	28.6	27.5	22.50	23.60	
45	28.1	27.0	22.00	23.10	
44	27.6	26.5	21.50	22.60	
43	27.1	26.0	21.00	22.10	
42	26.6	25.5	20.50	21.60	
41	26.1	25.0	20.00	21.10	
40	25.6	24.5	19.50	20.60	
39	25.1	24.0	19.00	20.10	
38	24.6	23.5	18.50	19.60	
37	24.1	23.0	18.00	19.10	
36	23.6	22.5	17.50	18.60	
35	23.1	22.0	17.00	18.10	
34	22.6	21.5	16.50	17.60	
33	22.1	21.0	16.00	17.10	
32	21.6	20.5	15.50	16.60	
31	21.1	20.0	15.00	16.10	
30	20.6	19.5	14.50	15.60	
29	20.1	19.0	14.00	15.10	
28	19.6	18.5	13.50	14.60	
27	19.1	18.0	13.00	14.10	
26	18.6	17.5	12.50	13.60	
25	18.1	17.0	12.00	13.10	
24	17.6	16.5	11.50	12.60	
23	17.1	16.0	11.00	12.10	
22	16.6	15.5	10.50	11.60	
21	16.1	15.0	10.00	11.10	
20	15.6	14.5	9.50	10.60	
19	15.1	14.0	9.00	10.10	
18	14.6	13.5	8.50	9.60	
17	14.1	13.0	8.00	9.10	
16	13.6	12.5	7.50	8.60	
15	13.1	12.0	7.00	8.10	
14	12.6	11.5	6.50	7.60	
13	12.1	11.0	6.00	7.10	
12	11.6	10.5	5.50	6.60	
11	11.1	10.0	5.00	6.10	
10	10.6	9.5	4.50	5.60	
9	10.1	9.0	4.00	5.10	
8	9.6	8.5	3.50	4.60	
7	9.1	8.0	3.00	4.10	
6	8.6	7.5	2.50	3.60	
5	8.1	7.0	2.00	3.10	
4	7.6	6.5	1.50	2.60	



Electrical Characteristics:
 Current rating: 0.5A AC/DC
 Voltage rating: 50V AC/DC
 Temperature range: -25°C~+85°C
 Withstand Voltage: 500V AC/Minute
 Contact Resistance: ≤ 30mΩ
 Insulation resistance: ≥ 500MΩ
 Relative Humidity: 95% Max.

Material Description:
 Contact: Phosphor Bronze Tin/Gold Plated
 Solder Tab: Brass Tin Plated
 Housing: Thermoplastic(UL94V-0)
 Slider: Thermoplastic(UL94V-0)

SERIES NO. CONTACT TYPE Pin no. CONTACT PLATING PACKAGE
 LFPC-K835 — B — XX — PT — 2
 FPC 0.5 pitch ZIF B: Bottom contact 04~60 PT : PURE TIN 1:Tube
 R/A SMT CONN. G1 : Gold Flash 2:T&R

公認/UNLESS OTHERWISE SPECIFIED TOLERANCES ARE		單位/Unit mm	品名/Title :
.X	±0.35	比例/Scale	FPC 0.5mm Pitch ZIF SMT R/A 2.0H Bottom contact conn.
.XX	±0.20	Free	料號/Part No :
ANG.	±3°	Size A4	LFPC-K835-B-XX-XX-X
A0	NEW DRAWING	2018.06.18	圖號/Drawing No :
REV	概述/REVISION	日期/DATE	

鍊亨電子有限公司
 LAI HENG TECHNOLOGY LTD.
 TEL:(02) 8228-6487 FAX:(02) 8228-6486

核加/APPD. 7/6 審核/CHKD. Joe 製圖/DR. Mandy 張數/Sheet 1 of 1

REV. A0