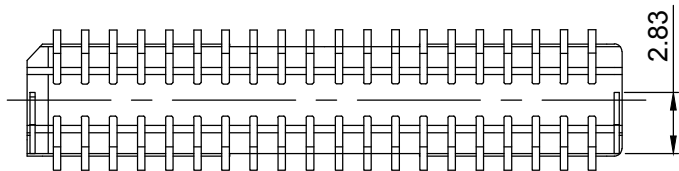
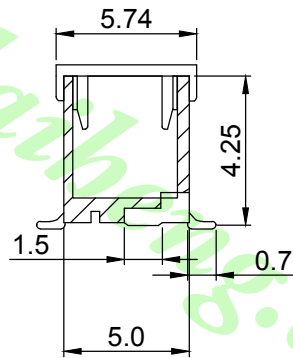
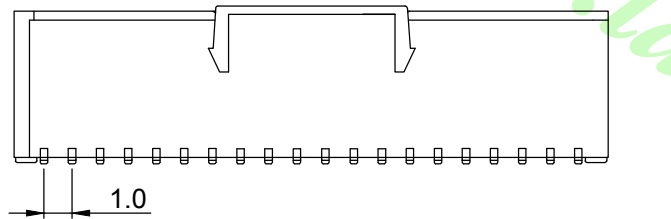


RECOMMENDED P.C. BOARD PATTERN DIM.



SPECIFICATIONS

Electrical

Voltage Rating: 50VAC DC.

Contact Rating: 1.0A AC DC (AWG 28).

Contact Resistance: Initial value/20 mΩ max;

After environmental testing/40 mΩ max.

Insulator Resistance: 100 MΩ min.

Temperature Range: -25°C to +85°C.

Withstanding voltage: 500V AC/minute.

Material and Finish

Insulator: Nylon 6T, UL94V-0

Insulator Color: Natural.

Contact: Phosphor Bronze, Gold-Plated.

Solder tad: Brass, Copper-undercoated, Tin-Plated.

Circuits	Dimension mm (in.)		Part No.
	A	B	
2×10	9.0(.354)	12.3(.484)	LW-SHD100S-2×10GO-SC
2×15	14.0(.551)	17.3(.681)	LW-SHD100S-2×15GO-SC
2×20	19.0(.748)	22.3(.878)	LW-SHD100S-2×20GO-SC
2×25	24.0(.945)	27.3(1.075)	LW-SHD100S-2×25GO-SC

			公差/UNLESS OTHERWISE SPECIFIED TOLERANCES ARE	單位/Unit mm	品名(Title):
			.XX ±0.15	比例/Scale	SMT 180° Type, CAP, Dual Row Without Peg, Gold Plated
A0	NEW DRAWING	2018.08.09	.X ±0.25	Free	料號/Part No:
REV	概述/REVISION	日期/DATE		A4	LW-SHD100S-2×XXGO-SC

				圖號/Drawing No:
				1001D-2×XX-SG-N


鍊亨電子有限公司
 LAI HENG TECHNOLOGY LTD.
 TEL:(02) 8228-6487 FAX:(02) 8228-6486
 核准/APPD: Joe 審核/CHKD: Joe 製圖/DR: Mandy 張數/Sheet: 1 of 1 REV: A0