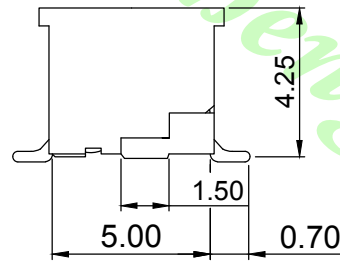
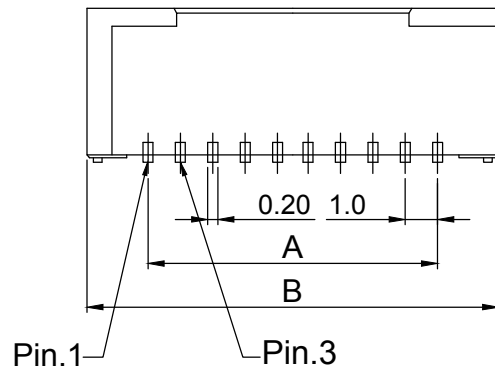


RECOMMENDED P.C. BOARD PATTERN DIM.



SPECIFICATIONS

Electrical

Voltage Rating: 50V(AC)

Current Rating: 1.0A

Contact Resistance: 20mΩ max.

Dielectric Withstanding Voltage: 500V AC/1min.

Insulation Resistance: 100MΩ min.

Material and Finish

Circuits: 20,30,40,50

Insulator: High Temperature Plastic UL94V-0


Color: Natural

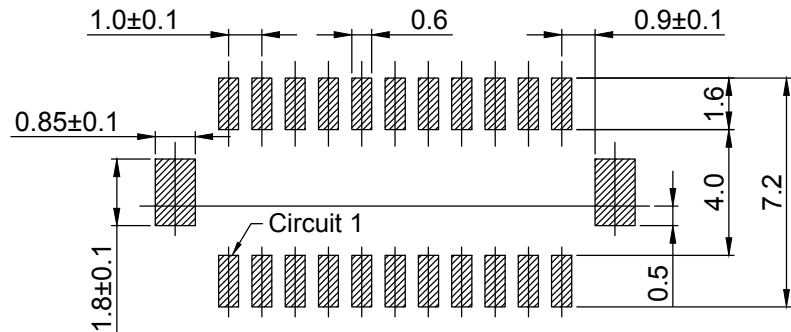
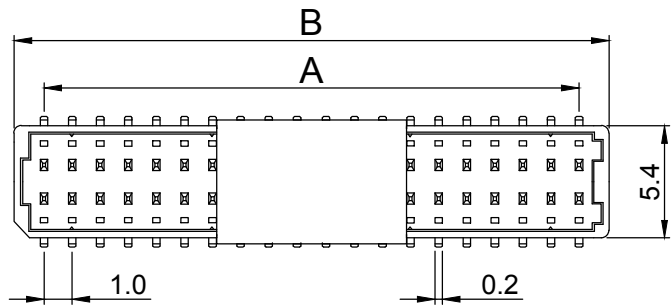
Contact: Phosphor Bronze, Tin-Plated

Plating: Tin plated.

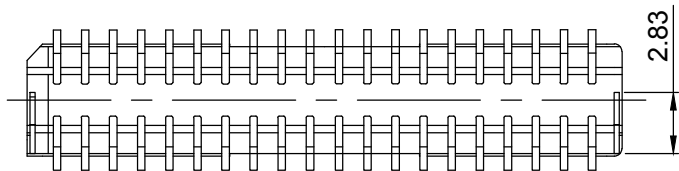
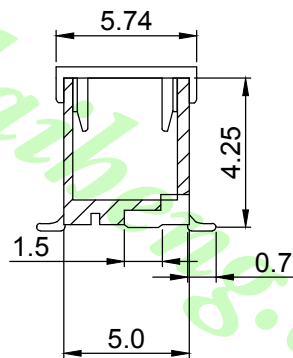
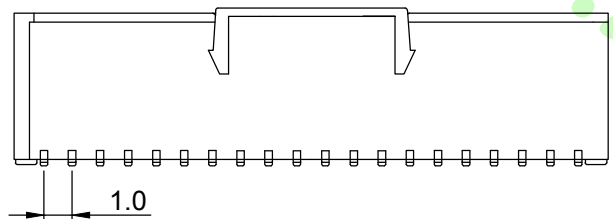
Temperature Range: -25°C ~ +85°C.

Circuits	Dimension mm		Part No.
	A	B	
2×10	9.0	12.3	LW-SHD100S-2×10-S
2×15	14.0	17.3	LW-SHD100S-2×15-S
2×20	19.0	22.3	LW-SHD100S-2×20-S
2×25	24.0	27.3	LW-SHD100S-2×25-S

		公差/UNLESS OTHERWISE SPECIFIED TOLERANCES ARE		單位/Unit mm	品名(Title):		 鍊亨電子有限公司 LAI HENG TECHNOLOGY LTD. TEL:(02) 8228-6487 FAX:(02) 8228-6486
		.XX ±0.15 .X ±0.25		比例/Scale Free	1.0mm Wire to Board Wafer SMT 180° (Top entry type) Dual Row		
A0	NEW DRAWING	2018.08.09		單位/Unit mm	料號/Part No:		圖號/Drawing No:
REV	概述/REVISION	日期/DATE		比例/Scale A4	LW-SHD100S-2×XX-S		1001D-2×XX-ST
						核准/APPD Joe	審核/CHKD. Mandy
						製圖/DR. Mandy	張數/Sheet 1 of 1
						REV. A0	



RECOMMENDED P.C. BOARD PATTERN DIM.



SPECIFICATIONS

Electrical

Voltage Rating: 50VAC DC.

Contact Rating: 1.0A AC DC (AWG 28).

Contact Resistance: Initial value/20 mΩ max;

After environmental testing/40 mΩ max.

Insulator Resistance: 100 MΩ min.

Temperature Range: -25°C to +85°C.

Withstanding voltage: 500V AC/minute.

Material and Finish

Insulator: Nylon 6T, UL94V-0

Insulator Color: Natural.

Contact: Phosphor Bronze, Tin-Plated.

Solder tad: Brass, Copper-undercoated, Tin-Plated.

Circuits	Dimension mm (in.)		Part No.
	A	B	
2×10	9.0(.354)	12.3(.484)	LW-SHD100S-2×10-SC
2×15	14.0(.551)	17.3(.681)	LW-SHD100S-2×15-SC
2×20	19.0(.748)	22.3(.878)	LW-SHD100S-2×20-SC
2×25	24.0(.945)	27.3(1.075)	LW-SHD100S-2×25-SC

			公差/UNLESS OTHERWISE SPECIFIED TOLERANCES ARE:
			.XX ±0.15
			.X ±0.25
A0	NEW DRAWING	2018.08.09	
REV	概述/REVISION	日期/DATE	

單位/Unit	mm
比例/Scale	Free
Size	A4

品名(Title):	SHD1.0mm Wire-to-Board Wafer	
	SMT 180° Type, CAP, Dual Row, Without Peg	
料號/Part No.:	LW-SHD100S-2×XX-SC	圖號/Drawing No.:
		1001D-2×XX-ST-N

		鍊亨電子有限公司 LAI HENG TECHNOLOGY LTD. TEL:(02) 8228-6487 FAX:(02) 8228-6486	
		核准/APPD	審核/CHKD.
7/0	Joe	Mandy	1 of 1
REV.	A0		