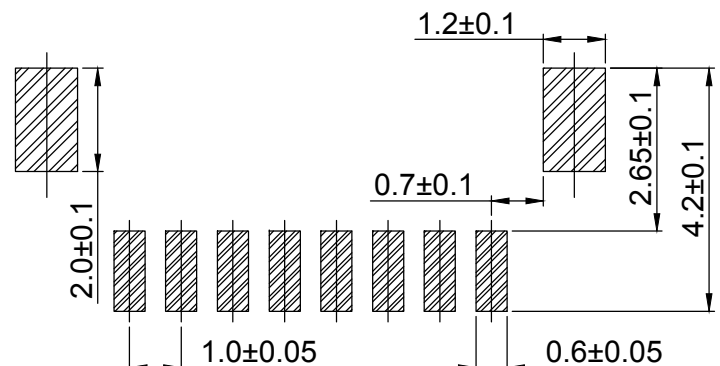
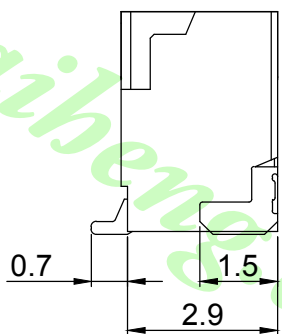
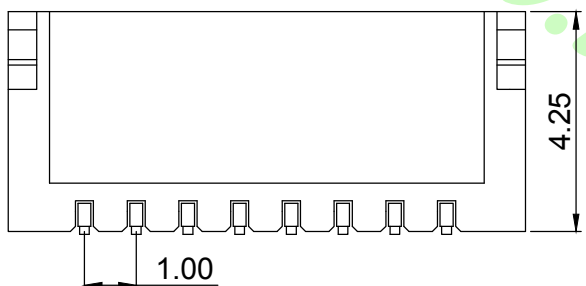


PART NO.:
LW-SH 100 S - XX -S

Type: SMT Top Entry
 No. Of Contact: 02~20
 Angle: Straight (180°)
 Pitch: 1.00mm
 Wafer Series No.

Poles	Dimension mm (in.)		Part No.
	A	B	
2	1.0(0.039)	4.0(0.157)	LW-SH100S-02-S
3	2.0(0.079)	5.0(0.197)	LW-SH100S-03-S
4	3.0(0.118)	6.0(0.236)	LW-SH100S-04-S
5	4.0(0.157)	7.0(0.276)	LW-SH100S-05-S
6	5.0(0.197)	8.0(0.315)	LW-SH100S-06-S
7	6.0(0.236)	9.0(0.354)	LW-SH100S-07-S
8	7.0(0.276)	10.0(0.394)	LW-SH100S-08-S
9	8.0(0.315)	11.0(0.433)	LW-SH100S-09-S
10	9.0(0.354)	12.0(0.472)	LW-SH100S-10-S
11	10.0(0.394)	13.0(0.512)	LW-SH100S-11-S
12	11.0(0.433)	14.0(0.551)	LW-SH100S-12-S
13	12.0(0.472)	15.0(0.591)	LW-SH100S-13-S
14	13.0(0.512)	16.0(0.630)	LW-SH100S-14-S
15	14.0(0.551)	17.0(0.669)	LW-SH100S-15-S
16	15.0(0.590)	18.0(0.708)	LW-SH100S-16-S
20	19.0(0.748)	22.0(0.866)	LW-SH100S-20-S



RECOMMENDED P.C. BOARD PATTERN DIM.


Specifications

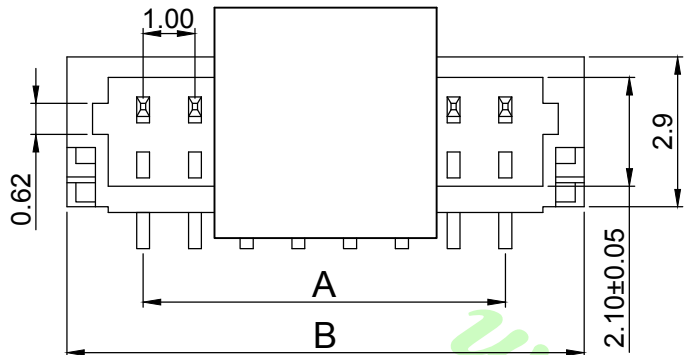
Electrical

- Voltage Rating: 50V(AC)
- Current Rating: 1.0A
- Contact Resistance: 20mΩ max.
- Dielectric Withstanding Voltage: 500V AC/1min.
- Insulation Resistance: 100MΩ min.

Material and Finish

- Insulator: Nylon 6T, UL94V-0
- Color: Natural
- Contact: Phosphor Bronze, Tin-Plated
- Temperature Range: -40°C~+105°C

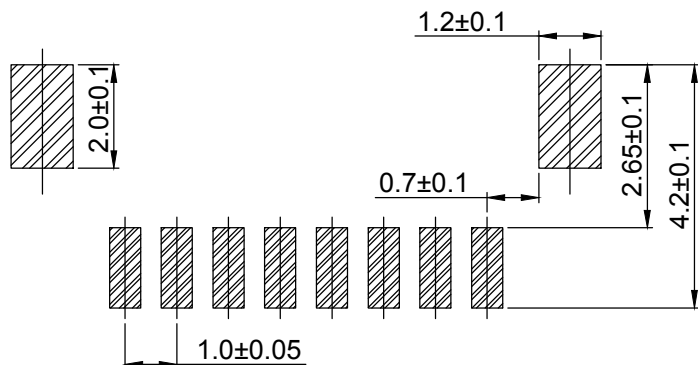
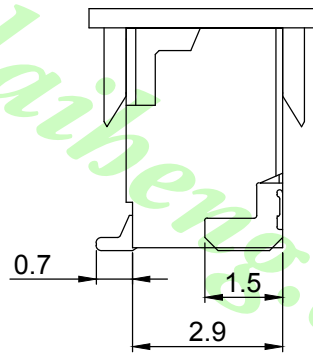
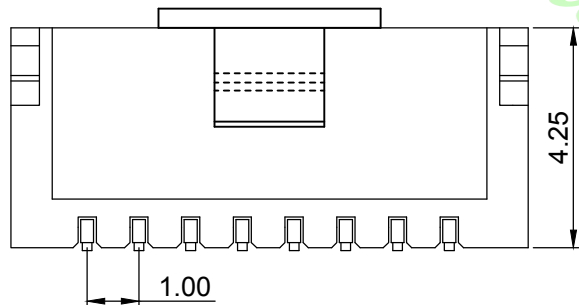
		公差/UNLESS OTHERWISE SPECIFIED TOLERANCES ARE		單位/Unit mm	品名(Title):		 鍊亨電子有限公司 LAI HENG TECHNOLOGY LTD. TEL:(02) 8228-6487 FAX:(02) 8228-6486
		.XX ±0.15 .X ±0.25		比例/Scale Free	1.0mm Wire-to-Board Header SMT 180° Type		
A0	NEW DRAWING	2018.08.09		單位/Unit mm	料號/Part No.:	圖號/Drawing No.:	核准/APPD
REV	概述/REVISION	日期/DATE		Size A4	LW-SH100S-XX-S	1001-XX-ST	審核/CHKD. Joe
							製圖/DR. Mandy
							張數/Sheet 1 of 1
							REV. A0



PART NO.:
LW-SH 100 S - XX -SRC

S: SMT Top Entry
 R: Tape & Reel
 C: CAP
 No. Of Contact: 02~20
 Angle: Straight (180°)
 Pitch: 1.00mm
 Wafer Series No.

Poles	Dimension mm (in.)		Part No.
	A	B	
2	1.0(0.039)	4.0(0.157)	LW-SH100S-02-SRC
3	2.0(0.079)	5.0(0.197)	LW-SH100S-03-SRC
4	3.0(0.118)	6.0(0.236)	LW-SH100S-04-SRC
5	4.0(0.157)	7.0(0.276)	LW-SH100S-05-SRC
6	5.0(0.197)	8.0(0.315)	LW-SH100S-06-SRC
7	6.0(0.236)	9.0(0.354)	LW-SH100S-07-SRC
8	7.0(0.276)	10.0(0.394)	LW-SH100S-08-SRC
9	8.0(0.315)	11.0(0.433)	LW-SH100S-09-SRC
10	9.0(0.354)	12.0(0.472)	LW-SH100S-10-SRC
11	10.0(0.394)	13.0(0.512)	LW-SH100S-11-SRC
12	11.0(0.433)	14.0(0.551)	LW-SH100S-12-SRC
13	12.0(0.472)	15.0(0.591)	LW-SH100S-13-SRC
14	13.0(0.512)	16.0(0.630)	LW-SH100S-14-SRC
15	14.0(0.551)	17.0(0.669)	LW-SH100S-15-SRC
16	15.0(0.590)	18.0(0.708)	LW-SH100S-16-SRC
20	19.0(0.748)	22.0(0.866)	LW-SH100S-20-SRC



RECOMMENDED P.C. BOARD PATTERN DIM.

Specifications

Electrical

Voltage Rating: 50V(AC)

Current Rating: 1.0A

Contact Resistance: 20mΩ max.

Dielectric Withstanding Voltage: 500V AC/1min.

Insulation Resistance: 100MΩ min.


Material and Finish

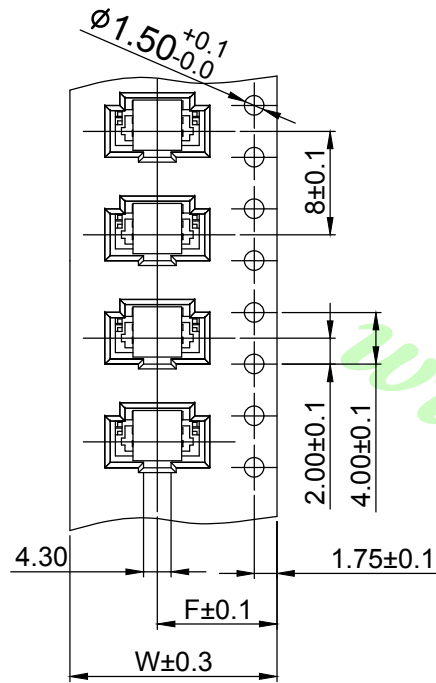
Insulator: Nylon 6T, UL94V-0

Color: Natural

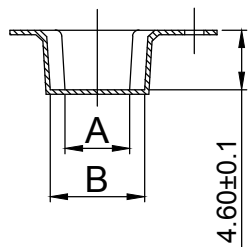
Contact: Phosphor Bronze, Tin-Plated

Temperature Range: -40°C~+105°C

		公差/UNLESS OTHERWISE SPECIFIED TOLERANCES ARE		單位/Unit mm	品名(Title): 1.0mm Wire-to-Board Header SMT 180° Type Cap, Tape & Reel		 鍊亨電子有限公司 LAI HENG TECHNOLOGY LTD. TEL:(02) 8228-6487 FAX:(02) 8228-6486
		.XX ±0.15 .X ±0.25		比例/Scale Free	料號/Part No: LW-SH100S-XX-SRC		
A0	NEW DRAWING	2018.08.09		Size A4	圖號/Drawing No: 1001-XX-ST-C		核准/APPD Joe
REV	概述/REVISION	日期/DATE					製圖/DR. Mandy
							張數/Sheet 1 of 2
							REV. A0

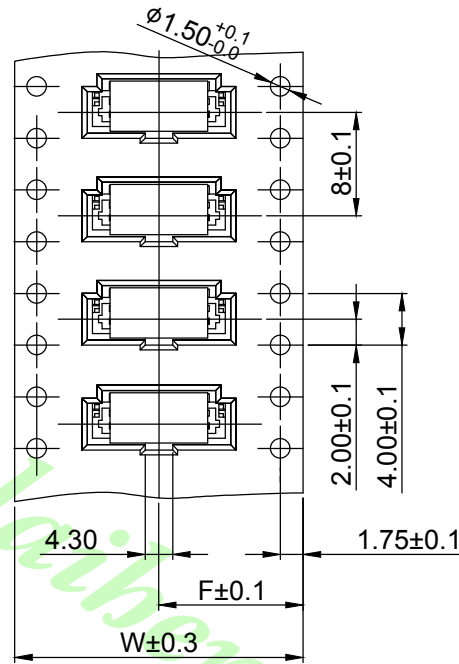


2~13P Contacts

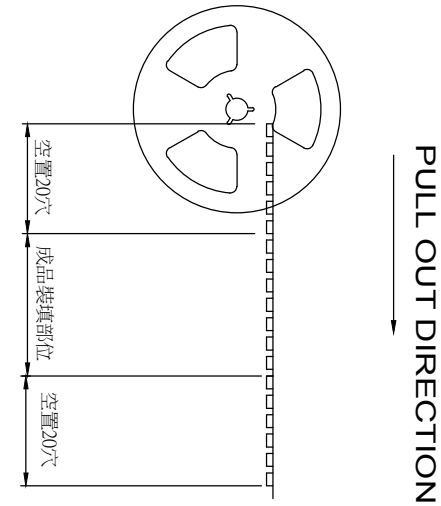
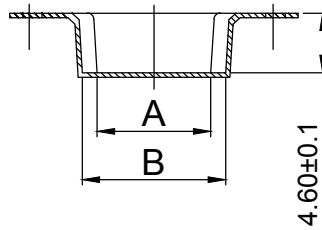


A=1.0xPoles

B=(1.0xPoles)+2.3mm



14~16P&20P Contacts



Poles	W	F	S	Q'TY/Reel
02	16.0	7.5		1000PCS
03	16.0	7.5		1000PCS
04	16.0	7.5		1000PCS
05	16.0	7.5		1000PCS
06	24.0	11.5		1000PCS
07	24.0	11.5		1000PCS
08	24.0	11.5		1000PCS
09	24.0	11.5		1000PCS
10	24.0	11.5		1000PCS
11	24.0	11.5		1000PCS
12	24.0	11.5		1000PCS
13	24.0	11.5		1000PCS
14	32.0	14.2	28.4	1000PCS
15	32.0	14.2	28.4	1000PCS
16	32.0	14.2	28.4	1000PCS
20	44.0	20.2	40.4	1000PCS

公差/UNLESS OTHERWISE SPECIFIED TOLERANCES ARE		單位/Unit	品名/Title):
		mm	1.0mm Wire-to-Board Header SMT 180° Type
		比例/Scale	Cap, Tape & Reel
		Free	料號/Part No :
		Size	A4
A0	NEW DRAWING	2018.08.09	
REV	概述/REVISION	日期/DATE	

.XX ±0.15
.X ±0.25

圖號/Drawing No :	1001-XX-ST-T&R
圖號/Drawing No :	LW-SH100S-XX-SRC


鍊亨電子有限公司
 LAI HENG TECHNOLOGY LTD.
 TEL:(02) 8228-6487 FAX:(02) 8228-6486
 核准/APPD: Joe 審核/CHKD: Mandy 製圖/DR: 2 of 2
 REV: A0