

SPECIFICATIONS

Electrical

Current Rating: 1A AC, DC

Voltage Rating: 125V AC/ max.

Operating Temp.: -20°C ~ +85°C

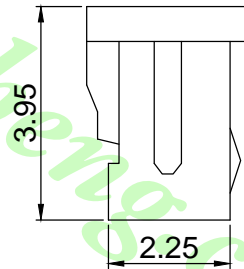
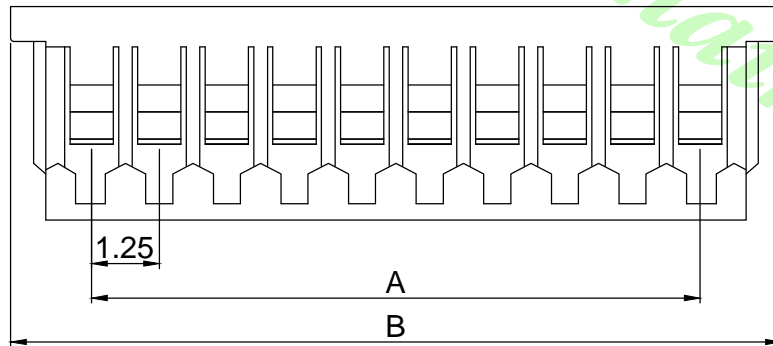
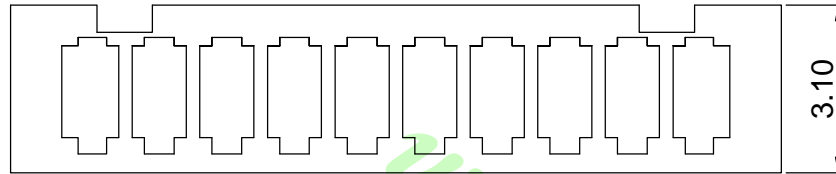
Insulation Resistance: 100MΩ/ min.

Dielectric Withstanding Voltage: 250V AC/ min.

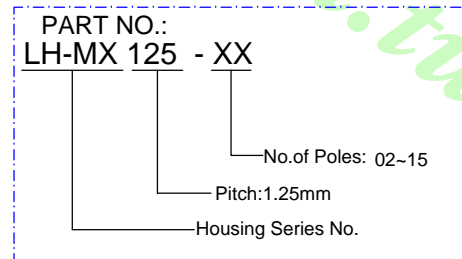
Contact Resistance: 20mΩ/ max.

Material

Material: Nylon66, UL94V-0



Poles	Dimension mm (in.)	
	A	B
2	1.25(0.049)	4.25(0.167)
3	2.50(0.098)	5.50(0.217)
4	3.75(0.148)	6.75(0.266)
5	5.00(0.197)	8.00(0.315)
6	6.25(0.246)	9.25(0.364)
7	7.50(0.295)	10.50(0.413)
8	8.75(0.344)	11.75(0.463)
9	10.00(0.394)	13.00(0.512)
10	11.25(0.443)	14.25(0.561)
11	12.50(0.492)	15.50(0.610)
12	13.75(0.541)	16.75(0.659)
13	15.00(0.591)	18.00(0.709)
14	16.25(0.640)	19.25(0.758)
15	17.50(0.689)	20.50(0.807)



			公差/UNLESS OTHERWISE SPECIFIED TOLERANCES ARE	單位/Unit mm	品名(Title): 1.25mm Wire-to-Board Housing		鍊亨電子有限公司 LAI HENG TECHNOLOGY LTD. TEL: (02) 8228-6487 FAX: (02) 8228-6486
A0	NEW DRAWING	2018.08.16	X.XX ±0.15 X.X ±0.25	比例/Scale Free	料號/Part No.: LH-MX125-XX		
REV	概述/REVISION	日期/DATE		Size A4	圖號/Drawing No.: 1250-XX		製圖/DR. Mandy
							報數/Sheet 1 of 1
							REV. A0