

RoHS

SPECIFICATIONS

MATERIAL AND FINISH

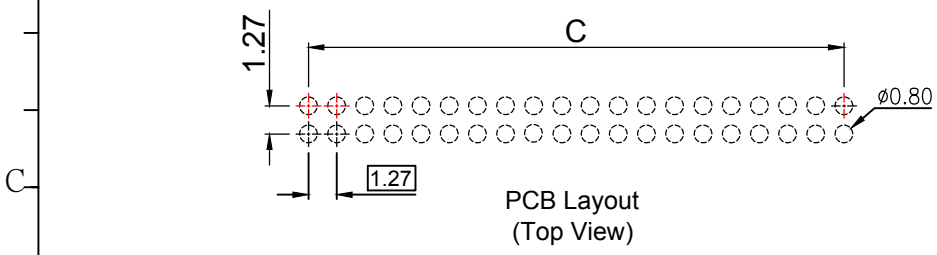
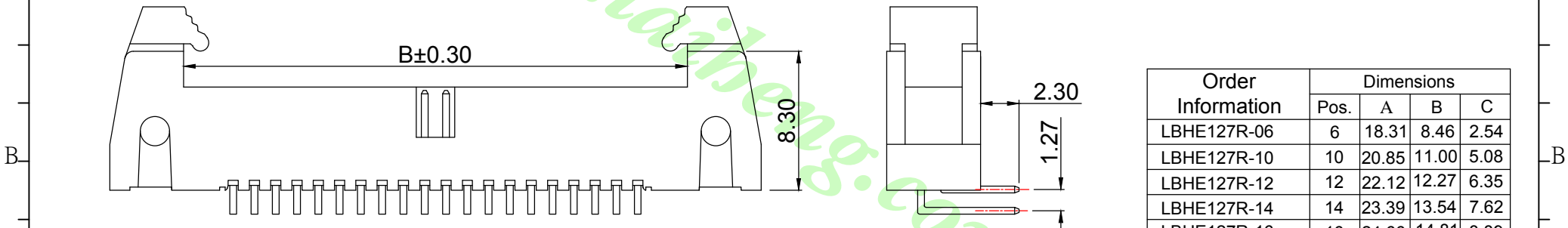
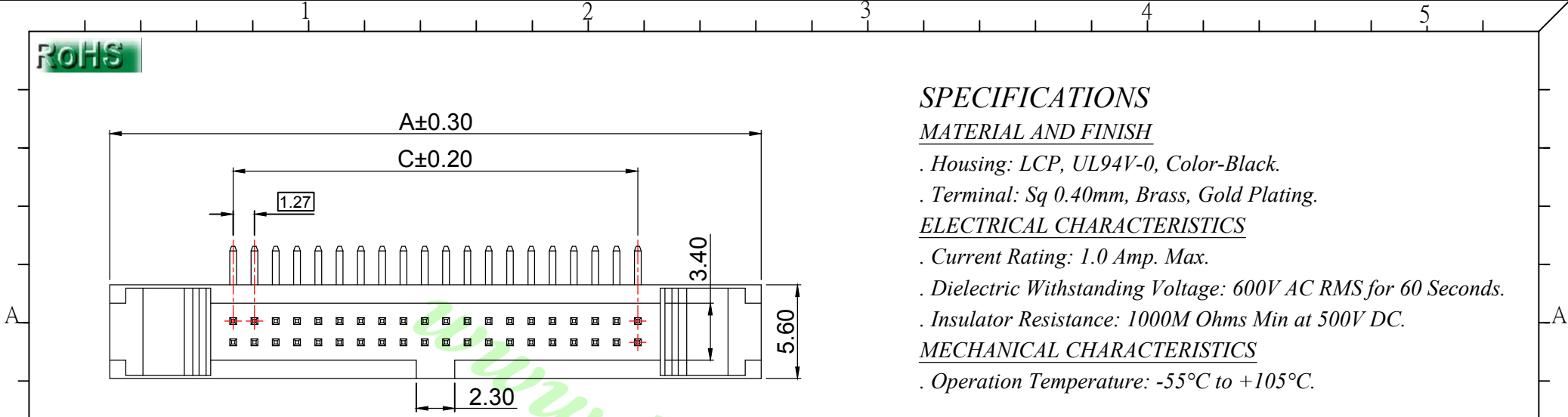
- . Housing: LCP, UL94V-0, Color-Black.
- . Terminal: Sq 0.40mm, Brass, Gold Plating.

ELECTRICAL CHARACTERISTICS

- . Current Rating: 1.0 Amp. Max.
- . Dielectric Withstanding Voltage: 600V AC RMS for 60 Seconds.
- . Insulator Resistance: 1000M Ohms Min at 500V DC.

MECHANICAL CHARACTERISTICS

- . Operation Temperature: -55°C to +105°C.



Part No.
LBHE 127 R - XX
 No. of Contacts (06~68)
 R: Right Angle Type
 1.27mm Pitch

Order Information	Dimensions			
	Pos.	A	B	C
LBHE127R-06	6	18.31	8.46	2.54
LBHE127R-10	10	20.85	11.00	5.08
LBHE127R-12	12	22.12	12.27	6.35
LBHE127R-14	14	23.39	13.54	7.62
LBHE127R-16	16	24.66	14.81	8.89
LBHE127R-20	20	27.20	17.35	11.43
LBHE127R-26	26	31.01	21.16	15.24
LBHE127R-30	30	33.55	23.70	17.78
LBHE127R-34	34	36.09	26.24	20.32
LBHE127R-40	40	39.90	30.05	24.13
LBHE127R-44	44	42.44	32.59	26.67
LBHE127R-50	50	46.25	36.40	30.48
LBHE127R-60	60	52.60	42.75	36.83
LBHE127R-64	64	55.14	45.29	39.37
LBHE127R-66	66	56.41	46.56	40.64
LBHE127R-68	68	57.68	47.83	41.91

公認/UNLESS OTHERWISE SPECIFIED TOLERANCES ARE			單位/Unit mm	品名/Title :	鍊亨電子有限公司 LAI HENG TECHNOLOGY LTD. TEL:(02) 8228-6487 FAX:(02) 8228-6486
			比例/Scale	1.27*1.27mm Box Header Ejector Type PCB Mount Right Angle With Latch	
A0	NEW DRAWING	2019.03.21	.X ±0.30 .XX ±0.20 .XXX ±0.10	Free Size A4	料號/Part No : LBHE127R-XX
REV	概述/REVISION	日期/DATE			圖號/Drawing No : HD223001-002XX
					核加/APPD. Joe 審核/CHKD. Joe 製圖/DR. Mandy 張數/Sheet 1 of 1